

GILDAN®



85800L



Premium Cotton Ladies' Double Pique Polo

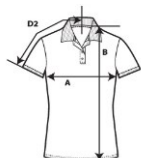
DETAILS

Weight
Content
Features

223.0 G/SqM (White 214.0 G/SqM)
100% Combed Ring Spun Cotton
Contoured welt collar and cuffs
Pad printed neck label and double-satin shoulder label
Rolled forward topstitched shoulder
Clean finished reversed placket with reinforced bottom box
3 colour-matched buttons
Twin needle bottom hem

Sizes
Case Packs
Colours
SKU's

S-2XL
S - 2XL 36 PIECES
20
100



SPECIFICATIONS

| Centimeters | Tol- | Tol+ | S | M | L | XL | 2XL |
|---|-------|-------|--------|--------|--------|--------|--------|
| Chest (A) | 2.540 | 2.540 | 43.000 | 46.000 | 50.000 | 54.000 | 58.000 |
| Length from HPS (B) | 2.540 | 2.540 | 63.000 | 66.000 | 69.000 | 72.000 | 76.000 |
| Sleeve length (centre back) (D2) | 2.540 | 2.540 | 36.000 | 38.000 | 41.000 | 43.000 | 46.000 |

| Inches | Tol- | Tol+ | S | M | L | XL | 2XL |
|---|-------|-------|--------|--------|--------|--------|--------|
| Chest (A) | 1.000 | 1.000 | 17.000 | 18.000 | 19.750 | 21.250 | 23.000 |
| Length from HPS (B) | 1.000 | 1.000 | 24.750 | 26.000 | 27.250 | 28.500 | 29.750 |
| Sleeve length (centre back) (D2) | 1.000 | 1.000 | 14.000 | 15.000 | 16.000 | 17.000 | 18.000 |

S-2XL

| COLOURS | Code | Comments |
|----------------------|------|---------------------------|
| Black | 036 | |
| Chalky Mint | 26G | |
| Daisy | 098 | |
| Dark Heather | 108 | 50% Cotton, 50% Polyester |
| Flo Blue | 23G | |
| Graphite Heather | 516 | 50% Cotton, 50% Polyester |
| Heliconia | 010 | |
| Irish Green | 167 | |
| Kiwi | 186 | |
| Light Blue | 069 | |
| Light Pink | 020 | |
| Maroon | 083 | |
| Military Green | 106 | |
| Navy | 032 | |
| Purple | 081 | |
| Red | 040 | |
| Ring Spun Sport Grey | 295 | 90% Cotton, 10% Polyester |
| Royal | 051 | |
| Sapphire | 026 | |
| White | 030 | |

CHANGES

Additions
S, M, L, XL, 2XL
Total Net Change 20 SKU's

Chalky Mint, Flo Blue, Graphite Heather, Military Green